

Lesson Topic: Architecture

Name of Teacher: Susan Strikovsky



acknowledge
[ak-nol-ij]

polite
[puh-lahyt]

intelligence
[in-tel-i-juhns]

cooperation
[koh-op-uh-rey-shuh n]

educational

When building **structures**, one must make sure they are strong, for example: out of concrete or **steel**.



The **stairs** in our house were not strong, and they collapsed. It is dangerous.

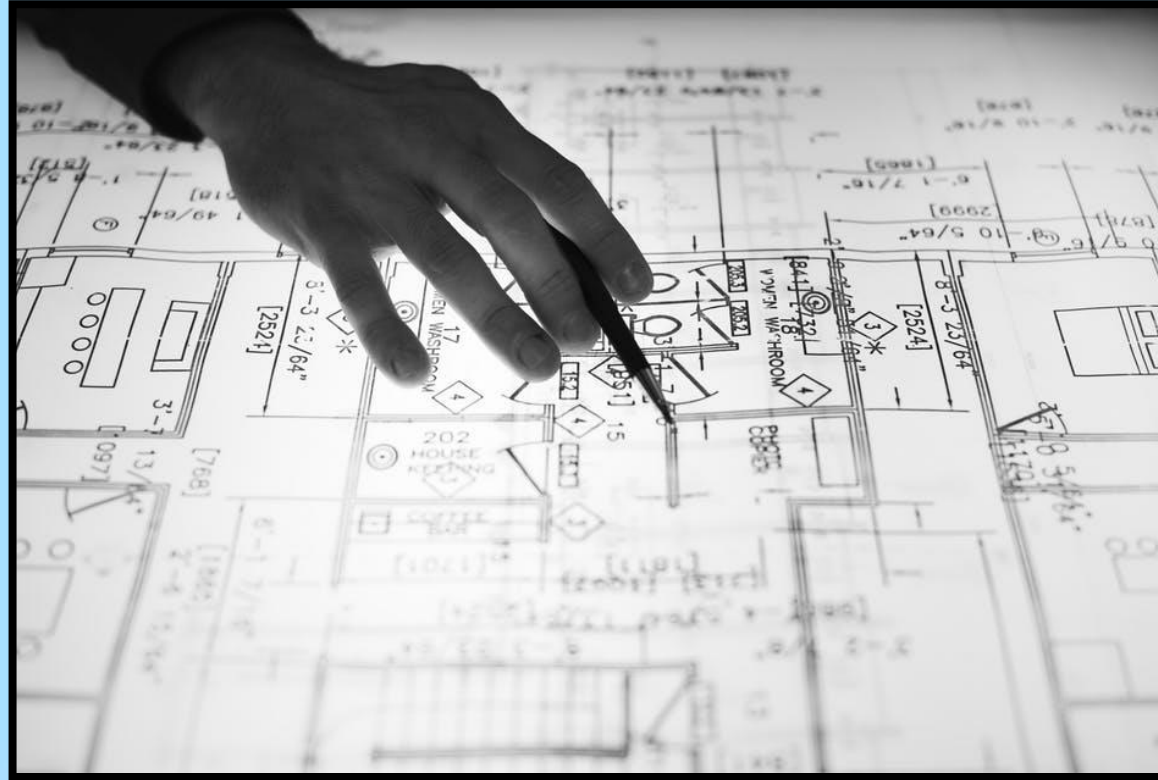


When building structures, it is **required** to hire **construction companies** that **solely specialize** in building safe **structures**.

It is **crucial**.



I **strongly** recommend consulting **experts.**



acknowledge
[ak-nol-ij]

polite
[puh-lahyt]

intelligence
[in-tel-i-juhns]

cooperation
[koh-op-uh-rey-shuh-n]

educational

Match the Words in Red to their Synonym

New Word	Synonym
Require	Exclusively/Only
Crucial	Needed/Necessity
Solely	Vital

Match the Words in Red to their Synonym

New Word	Synonym
Require	Exclusively/Only
Crucial	Needed/Necessity
Solely	Vital



Complete the Sentences with the New Words

1) When one is deathly ill, taking medication is _____.



acknowledge
[ak-nol-ij]

polite
[puh-lahyt]

intelligence
[in-tel-i-juhns]

cooperation
[koh-op-uh-rey-shuh n]

educational

Complete the Sentences with the New Words

1) When one is deathly ill, taking medication is crucial.

Complete the Sentences with the New Words

2) Stopping at a red light is _____ all over the world.

Complete the Sentences with the New Words

2) Stopping at a red light is required all over the world.

Today's lesson was about

Architecture



acknowledge
[ak-nol-ij]

polite
[puh-lahyt]

intelligence
[in-tel-i-juhns]

cooperation
[koh-op-uh-rey-shuh n]

educational